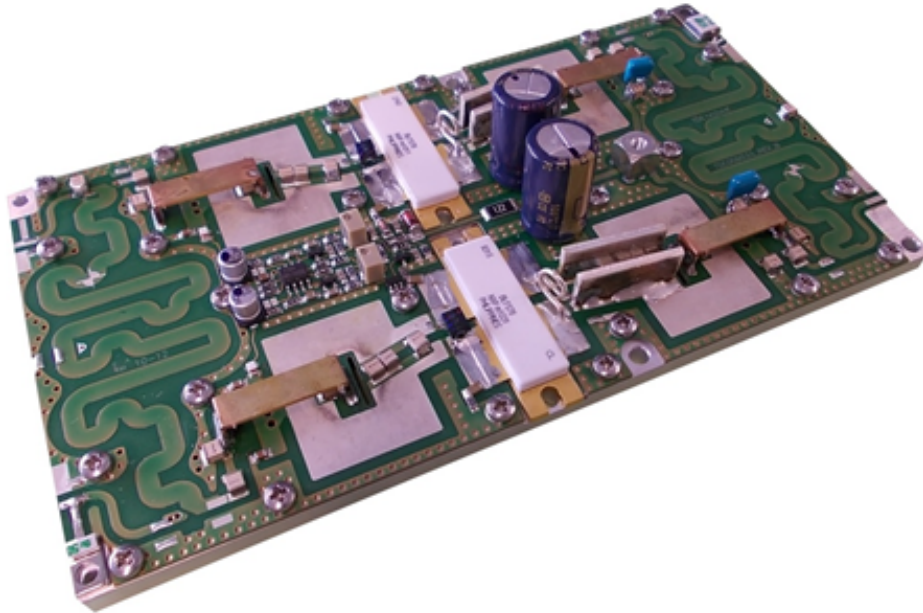


ITC 007ISM

300-440MHz 1500W RF Amplifier



General Description

This power amplifier is designed for ISM applications, where high power and coherent signal are required. This amplifier uses the latest and most reliable LDMOS device, to ensure high efficiency, high gain with relevant ruggedness. The design is based on printed matching circuit, to warranty the best performances repetition and minimum spread unit to unit.

This amplifier is suitable for use in CW or pulsed mode in the entire operative band.

Typical Applications:

- Industrial Heating
- Medical
- PMR
- Meteor scatter communications
- Radio astronomy

Main Characteristics

Frequency	300 to 440 MHz
Pout CW	500W (adj 0-300W)
Pout Pulsed	1500W (adj 0-1000W)
Efficiency	60% min
Gain	19 dB typ.
Operating	B class
Supply	48V nominal

ITC 007ISM

300-440MHz 1500W RF Amplifier

Technical Specifications

Frequency Range	300-440MHz
Output Power	1500W pulsed 300Wcw
Power Gain	19 dB
Supply Voltage	48V
Efficiency	60%
Quiescent Current	1 A
Input R Loss	-15dB
Load Mismatch	6:1 full phase VSWR

Mechanical

Dimensions (LxWxH)	160x85x28mm 6.29"x3.34"x1.10"
RF In/Out connection	Solder tab
DC feed connection	Screw
Carrier	Alluminium
Weight	0.5Kg

Environmental

Operating temperature	0-80°C (carrier temperature)
Storage temperature	-20 + 80°C (ambient temperature)
Humidity	up to 90% no condensing

Screws Type

Screws point 1-3-4-6 M2.5 and 2-5-7-8-9-10 M3 Socket head cap screws

4x split lock washers WZ ϕ 2.5 + 6x split lock washers WZ ϕ 3.5
4x flat washers WZ ϕ 2.5 + 6x flat washers WZ ϕ 3.5

Thermal Compound

Recommended Dow Corning 340 (thermal compound)

or equivalent

Ordering Code

ITC007ISM

Mechanical Layout

