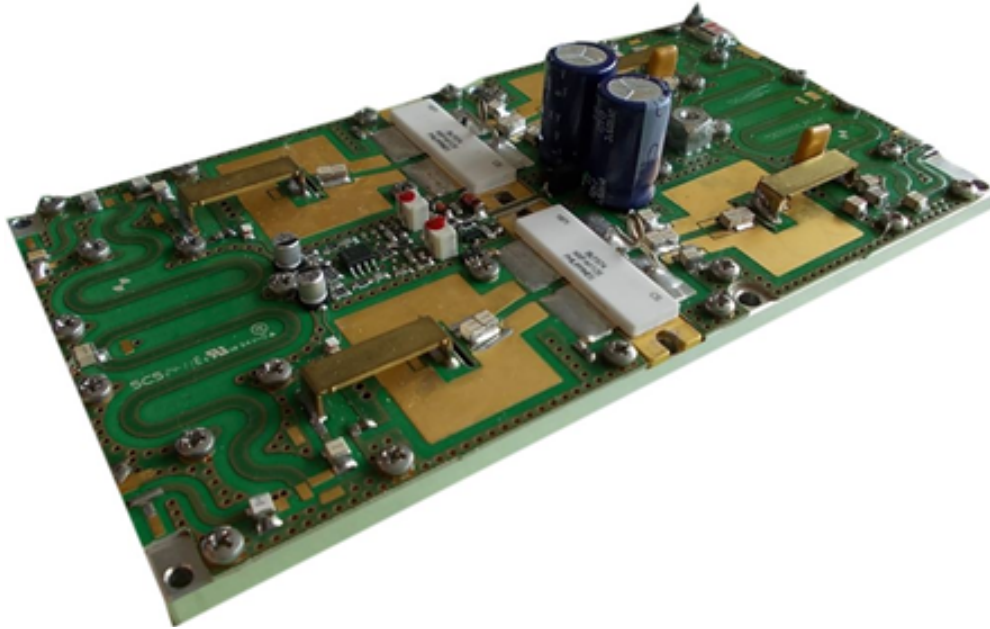


ITC 006ISM

130-250MHz 1500W High power RF Amplifier



General Description

This power amplifier is designed for ISM applications, where high power and coherent signal are required. This amplifier uses the latest and most reliable LDMOS device, to ensure high efficiency, high gain with relevant ruggedness. The design is based on printed matching circuit, to warranty the best performances repetitivity and minimum spread unit to unit.

This amplifier is suitable for use in CW or pulsed mode in the entire operative band.

Typical Applications:

- Industrial Heating
- Medical
- PMR
- Meteor scatter communications
- Radio astronomy

Main Characteristics

Frequency	130 to 250 MHz
Pout CW	500W (adj 0-500W)
Pout Pulsed	1500W (adj 0-1500W)
Efficiency	65% min
Gain	23 dB typ.
Operating	B class
Supply	48V nominal

ITC 006ISM

130-250MHz 1500W High power RF Amplifier

Technical Specifications

Frequency Range	130-250MHz
Output Power	1500W pulsed 500Wcw
Power Gain	23 dB
Supply Voltage	48V
Efficiency	65%
Quiescent Current	1 A
Input R Loss	-15dB
Load Mismatch	10:1 full phase VSWR

Mechanical

Dimensions (LxWxH)	160x85x28mm 6.3"x3.34"x1.10"
RF In/Out connection	Solder tab
DC feed connection	Screw
Carrier	Alluminium
Weight	0.5Kg

Environmental

Operating temperature	0-80°C (carrier temperature)
Storage temperature	-20 + 80°C (ambient temperature)
Humidity	up to 90% no condensing

Screws Type

Screws point 1-3-4-6 M2.5 and 2-5-7-8-9-10 M3 Socket head cap screws

4x split lock washers WZ ϕ 2.5 + 6x split lock washers WZ ϕ 3.5

4x flat washers WZ ϕ 2.5 + 6x flat washers WZ ϕ 3.5

Thermal Compound

Recommended Dow Corning 340 (thermal compound)

or equivalent

Ordering Code

ITC006ISM

Mechanical Layout

